



PRESENTED BY CENTER CITY PROPRIETORS ASSOCIATION

WOMEN *changing* THE CITY

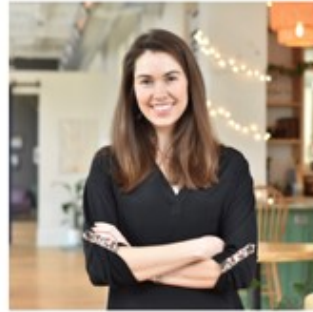
evolving the business of food



Jezabel Careaga



Bridget Foy



Tess Hart



Michelle Nelson



Jamila Robinson

Presented by



Partnering Organizations: CREW Greater Philadelphia | Greater Philadelphia Hispanic Chamber of Commerce | Professional Women's Roundtable | The Walnut Club



Jamila Robinson

Food Editor, The Philadelphia Inquirer
801 Market St., Suite 300
Philadelphia, PA 19107
215-779-5511
jrobinson@inquirer.com
www.inquirer.com
@jamilarobinson

Jamila Robinson is the Food Editor of the Philadelphia Inquirer where she leads a team of reporters and directs its multiplatform food content franchise.

Previously, Jamila was an editorial director for Atlantic Media where she led content strategy projects for media companies, a senior content strategist for the USA TODAY NETWORK, where she managed editorial strategy for special projects including USA TODAY's Wine and Food Experience; a senior editor for features at The Atlanta Journal-Constitution, leading its features and entertainment team.

Jamila is the chair of the James Beard Foundation Journalism Committee, which organizes the highest honors in food media. She also serves as the coach and mentor for the JBF fellowship program. Jamila is an idea person, an avid traveler, and in her free time, coaches figure skating.



Jezabel Careaga

Entrepreneur, cook, furniture designer & maker, Jezabel's
206-208 S 45th Street
Philadelphia, PA 19104
215.554.7380
jezabel@jezabelcareaga.com
www.jezabelcareaga.com
@jezabelscafe

Jezabel Careaga is an entrepreneur, chef, woodworker, designer, and community leader from Palpalá, Jujuy, NW Argentina. In addition to her degree in Tourism & Hotel Management focusing on international languages and business, she received a progressive education encompassing climate change, sustainability, and mental health - issues that she cares about deeply today. After a formative work experience in an 800-room hotel in Miami, Jezabel moved to Philadelphia to start her own business.

In 2010 she opened Jezabel's Argentine Bakery & BYO, with a mission to offer a welcoming and delicious NW Argentine experience while prioritizing environmental sustainability, community growth, and financial stability. In 2018 Jezabel's relocated to West Philadelphia and expanded her offerings to include cooking classes and special events. Her latest venture is Jezabel's Atelier where her furniture designs and handiwork are showcased among a selection of artisan home goods. Over the last ten years Jezabel's has become a staple in Philly's dining scene and her empanadas, alfajores, and multitude of Argentine-style pastries have received critical acclaim and widespread popularity.



Bridget Foy

Cry Baby Pasta
627 S. 3rd Street, Philadelphia, PA 19147
267-534-3076
www.crybabypasta.com
@crybabypasta
bridget@bridgetfoys.com

Bridget Foy's and East Philly Café (Pop-up)
200 South Street, Philadelphia, PA 19147
215-922-1813
www.bridgetfoys.com
@bridgetfoys

Bridget Foy was born into the restaurant business. Her family owned East Philly Cafe at 2nd & South which was later renamed Bridget Foy's in 1984. Her love of the hospitality business was evident from a young age. She graduated from Johnson & Wales in 2004 with a degree in Restaurant Management. After a stint in NYC with BR Guest restaurant group, she returned to Philadelphia. Bridget worked through every position in the family restaurant eventually becoming GM.

When fire ravished the business (currently being rebuilt), she opened Crybaby Pasta & Wine with her husband, industry veteran Paul Rodriguez. Together they are navigating through the Covid pandemic while getting ready to reopen her namesake restaurant Bridget Foy's.



Tess Hart

co-founder and CEO, Triple Bottom Brewing
915 Spring Garden Street
Philadelphia, PA 19123
610-547-5367
tess@triplebottombrewing.com
www.triplebottombrewing.com
@triplebottomco
@triplebottombrewing

Tess is co-founder and CEO of Triple Bottom Brewing — a small batch craft brewery with a fair chance mission in Philadelphia, PA. Before starting Triple Bottom, she worked in Washington, DC, as a strategy consultant to foundations, nonprofits, and social enterprises. She has an MBA from the Yale School of Management and Master of Environmental Management from the Yale School of Forestry and Environmental Studies.



Michelle Nelson, Ph.D.

Founder, The Mama-Tee Community Fridge Project
21 S. 11th Street, Unit 503
Philadelphia, PA 19107
917-242-9333
michelle@mama-tee.com
www.mamateefridge.com
GoFundMe: [gf.me/u/yk3iqj](https://www.gofundme.com/u/yk3iqj)
[instagram.com/mamateefridge](https://www.instagram.com/mamateefridge)

Michelle Nelson is the founder of The Mama-Tee Community Fridge Project. She holds an MBA in Finance and a Ph.D. in Educational Psychology. She has over 15 years of experience as an elementary school teacher, curriculum publisher, and entrepreneur. The Mama-Tee Community Fridge Project was nominated for the **2020 Sustainability Award** in Philadelphia, PA, and has been featured on several news outlets. Dr. Nelson was a guest professor at Temple University where she spoke about the importance of focusing on "people first" when it comes to planning and developing a neighborhood.

WOMEN *changing* THE CITY

PRESENTED BY CENTER CITY PROPRIETORS ASSOCIATION



Republic Bank is one of the largest Philadelphia-based retail banking institutions with 25 locations located in Atlantic, Burlington, Camden, and Gloucester Counties in New Jersey and Bucks, Delaware, Montgomery and Philadelphia Counties in Pennsylvania. In the midst of an aggressive growth plan, referred to as "The Power of Red is Back," the bank is rapidly expanding its footprint in Metro Philadelphia and Metro New York. Republic Bank stores are open seven days a week, 361 days a year, with extended lobby and drive-thru hours, providing customers with the longest hours of any bank in the area. It offers big bank benefits with a small-town feel, and its retail-based model is focused on fanatical customer service and absolute convenience. For more information, visit www.myrepublicbank.com



Accelion, an outsourced sales and marketing company, helps national brands create new revenue streams through relationship building that convert experiences into sales. Through our network of relationship management experts, we help Fortune 500 companies acquire, retain, and re-engage customers in telecommunications, cable, and home services fields. www.accelion.com



Excellence Through Strategic IT™

ITData has been providing executive leadership and impeccable project execution for our clients since 1997. Our senior technology staff has nearly 100 years of combined experience recommending, implementing and managing comprehensive, unified IT solutions for customers such as The Annenberg Foundation, Binswanger, The Philadelphia Foundation and Health Partners. Our industry experience includes Healthcare Network Solutions, Nonprofit Organizations, Education, Retail, and Government Enterprise Networks and more. For information, visit www.itdata.com.



Driving growth to every corner of Philadelphia

PIDC is Philadelphia's public-private economic development corporation. Our mission is to spur investment, support business growth, and foster developments that create jobs, revitalize neighborhoods, and drive growth to every corner of Philadelphia. We are focused on supporting growing businesses, investing in high-impact community revitalization, and creating workplaces for the future. With flexible financing products, a targeted portfolio of industrial and commercial real estate, and decades of Philadelphia-based knowledge, PIDC provides the resources and expertise to help our clients invest, develop, and grow.



Rivers Casino Philadelphia is a premier gaming and entertainment destination located along the Delaware Riverfront in Philadelphia and is open 24 hours a day, seven days a week. Rivers features an action-packed gaming floor that includes a variety of slots, table games, hybrid gaming seats and a state-of-the-art BetRivers Sportsbook for watching and wagering. The casino offers an array of dining options perfect to please any palate as well as free parking. For more information, please visit RiversCasinoPhiladelphia.com.



School of Sport, Tourism and Hospitality Management

Established in 1998, the School of Sport, Tourism and Hospitality Management (STHM) at Temple University has a distinguished tradition preparing leaders in the sport, tourism and hospitality industries. The school's innovative approach to learning combined with the location in the heart of Philadelphia fosters transformational educational experiences. Thoroughly committed to providing student-centered education and professional development relevant to today's thriving sport, tourism and hospitality industry—STHM integrates applicable, real-world experience into the curriculum and classroom through its global network of industry partners and well-connected alumni network. In addition to the educational program, the school's two cutting-edge research centers support the school's mission of advancing the industry through high-quality research. Visit sthm.temple.edu.

CCPA's Upcoming Events

<https://www.centercityproprietors.org/calendar#!event-list>

April 8

Lunch with the City's Leaders

Tayyib Smith, Little Giant Creative

April 15

Grow Your Business by Working on Your Business

Panel Discussion with Graduates of Goldman Sachs 10,000 Small Businesses

April 21

Meet the Developers

April 23

Sustainable Philadelphia

April 28

Lunch with the City's Leaders

Maria D. Quiñones Sánchez, Councilmember District 7, City of Philadelphia

June 9

Women Changing the City

Partnering Organizations

CREW Greater Philadelphia | Greater Philadelphia Hispanic Chamber of Commerce
Professional Women's Roundtable | The Walnut Club

Additional support for CCPA programs has been provided by:

